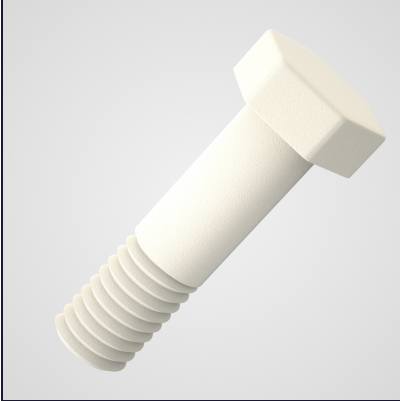


Hex head screws ~ DIN 931



The hex head screw DIN 931, equipped with a six-sided head, allows for precise tightening torque. Partially threaded and made of plastic materials, it is easy to handle with a wrench or socket. Valued in environments where precision and reliability are essential, it stands out for its insulating properties, corrosion resistance, and compliance with DIN 931 standards. This screw is a preferred choice for the most demanding applications.

REF

E8665655/A5F1HQJ6C-en

REF