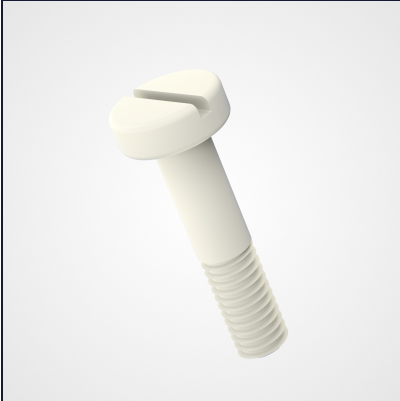


## Pan head screws DIN 85



The wide cylinder head screw DIN 85 is a versatile fastener designed to provide reliable and durable assembly. Compliant with the DIN 85 standard, it is available with full or partial threading and is distinguished by its wide, slotted cylindrical head, which simplifies manual use with a screwdriver. Made of plastic, particularly natural polyamide or PTFE, this screw offers effective electrical insulation and excellent protection against corrosion.

REF	D	LONGUEUR	PARTNOFILT
DA65655/A5F-en	M10	100.0	50.0
REF	D	LONGUEUR	PARTNOFILT