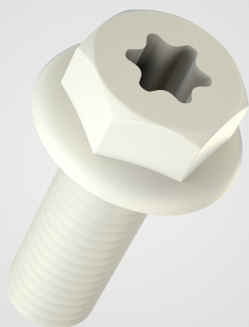


## Vis tête hexagonale / 6 lobes avec embase



La vis tête hexagonale / 6 lobes avec embase est une vis en plastique, entièrement filetée, est recommandée pour des assemblages précis et fiables. Son empreinte Torx en forme d'étoile à six branches assure un couple de serrage élevé, limitant la détérioration de la vis même lors d'une utilisation intensive. Compatible avec un tournevis dédié ou une clé adaptée, cette vis combine solidité et praticité. Fabriquée en plastique, la vis tête hexagonale / 6 lobes avec embase garantit une prise propre et sûre pour des projets nécessitant durabilité et robustesse.

| REF           | D   | DIAMÈTRE | LONGUEUR | H   | HAUTEUR | S  | TORX | PARTNOFIL |
|---------------|-----|----------|----------|-----|---------|----|------|-----------|
| E886565Y2F-fr | M10 | 21.0     | 10.0     | 3.5 | 3.5     | 16 | 50   |           |
| E886567Y2F-fr | M10 | 21.0     | 12.0     | 3.5 | 3.5     | 16 | 50   |           |
| E88656BY2F-fr | M10 | 21.0     | 16.0     | 3.5 | 3.5     | 16 | 50   |           |
| E886575Y2F-fr | M10 | 21.0     | 20.0     | 3.5 | 3.5     | 16 | 50   |           |
| E88657AY2F-fr | M10 | 21.0     | 25.0     | 3.5 | 3.5     | 16 | 50   |           |
| E886585Y2F-fr | M10 | 21.0     | 30.0     | 3.5 | 3.5     | 16 | 50   |           |
| E88658AY2F-fr | M10 | 21.0     | 35.0     | 3.5 | 3.5     | 16 | 50   |           |
| E886595Y2F-fr | M10 | 21.0     | 40.0     | 3.5 | 3.5     | 16 | 50   |           |
| E88659AY2F-fr | M10 | 21.0     | 45.0     | 3.5 | 3.5     | 16 | 50   |           |
| E8865A5Y2F-fr | M10 | 21.0     | 50.0     | 3.5 | 3.5     | 16 | 50   |           |
| E8865B5Y2F-fr | M10 | 21.0     | 60.0     | 3.5 | 3.5     | 16 | 50   |           |
| E8865BY2F-fr  | M10 | 21.0     | 6.0      | 3.5 | 3.5     | 16 | 50   |           |
| E8865DY2F-fr  | M10 | 21.0     | 8.0      | 3.5 | 3.5     | 16 | 50   |           |
| E886765Y2F-fr | M12 | 21.0     | 10.0     | 3.5 | 3.5     | 16 | 50   |           |
| E886767Y2F-fr | M12 | 21.0     | 12.0     | 3.5 | 3.5     | 16 | 50   |           |

|                 |     |      |      |     |     |    |    |     |
|-----------------|-----|------|------|-----|-----|----|----|-----|
| E88676BY2F-fr   | M12 | 21.0 | 16.0 | 3.5 | 3.5 | 16 | 50 |     |
| E886775Y2F-fr   | M12 | 21.0 | 20.0 | 3.5 | 3.5 | 16 | 50 |     |
| E88677AY2F-fr   | M12 | 21.0 | 25.0 | 3.5 | 3.5 | 16 | 50 |     |
| E886785Y2F-fr   | M12 | 21.0 | 30.0 | 3.5 | 3.5 | 16 | 50 |     |
| E88678AY2F-fr   | M12 | 21.0 | 35.0 | 3.5 | 3.5 | 16 | 50 |     |
| E886795Y2F-fr   | M12 | 21.0 | 40.0 | 3.5 | 3.5 | 16 | 50 |     |
| E88679AY2F-fr   | M12 | 21.0 | 45.0 | 3.5 | 3.5 | 16 | 50 |     |
| E8867A5Y2F-fr   | M12 | 21.0 | 50.0 | 3.5 | 3.5 | 16 | 50 |     |
| E8867B5Y2F-fr   | M12 | 21.0 | 60.0 | 3.5 | 3.5 | 16 | 50 |     |
| E8867C5Y2F-fr   | M12 | 21.0 | 70.0 | 3.5 | 3.5 | 16 | 50 |     |
| E8867D5Y2F-fr   | M12 | 21.0 | 80.0 | 3.5 | 3.5 | 16 | 50 |     |
| E88965Y2F-fr    | M4  | 11.5 | 10.0 | 2.0 | 2.0 | 8  | 20 |     |
| E88967Y2F-fr    | M4  | 11.5 | 12.0 | 2.0 | 2.0 | 8  | 20 |     |
| E8896BY2F-fr    | M4  | 11.5 | 16.0 | 2.0 | 2.0 | 8  | 20 |     |
| E88975Y2F-fr    | M4  | 11.5 | 20.0 | 2.0 | 2.0 | 8  | 20 |     |
| E8897AY2F-fr    | M4  | 11.5 | 25.0 | 2.0 | 2.0 | 8  | 20 |     |
| E88985/7AY2F-fr | M4  | 11.5 | 30.0 | 2.0 | 2.0 | 8  | 20 | 5.0 |
| E889BY2F-fr     | M4  | 11.5 | 6.0  | 2.0 | 2.0 | 8  | 20 |     |
| E889DY2F-fr     | M4  | 11.5 | 8.0  | 2.0 | 2.0 | 8  | 20 |     |
| E88A65Y2F-fr    | M5  | 11.5 | 10.0 | 2.0 | 2.0 | 8  | 20 |     |
| E88A67Y2F-fr    | M5  | 11.5 | 12.0 | 2.0 | 2.0 | 8  | 20 |     |
| E88A6BY2F-fr    | M5  | 11.5 | 16.0 | 2.0 | 2.0 | 8  | 20 |     |
| E88A75Y2F-fr    | M5  | 11.5 | 20.0 | 2.0 | 2.0 | 8  | 20 |     |
| E88A7AY2F-fr    | M5  | 11.5 | 25.0 | 2.0 | 2.0 | 8  | 20 |     |

|              |    |      |      |     |     |    |    |
|--------------|----|------|------|-----|-----|----|----|
| E88A85Y2F-fr | M5 | 11.5 | 30.0 | 2.0 | 2.0 | 8  | 20 |
| E88A8AY2F-fr | M5 | 11.5 | 35.0 | 2.0 | 2.0 | 8  | 20 |
| E88A9AY2F-fr | M5 | 11.5 | 45.0 | 2.0 | 2.0 | 8  | 20 |
| E88AA5Y2F-fr | M5 | 11.5 | 50.0 | 2.0 | 2.0 | 8  | 20 |
| E88ABY2F-fr  | M5 | 11.5 | 6.0  | 2.0 | 2.0 | 8  | 20 |
| E88ADY2F-fr  | M5 | 11.5 | 8.0  | 2.0 | 2.0 | 8  | 20 |
| E88B65Y2F-fr | M6 | 14.0 | 10.0 | 2.4 | 2.4 | 10 | 30 |
| E88B67Y2F-fr | M6 | 14.0 | 12.0 | 2.4 | 2.4 | 10 | 30 |
| E88B6BY2F-fr | M6 | 14.0 | 16.0 | 2.4 | 2.4 | 10 | 30 |
| E88B75Y2F-fr | M6 | 14.0 | 20.0 | 2.4 | 2.4 | 10 | 30 |
| E88B7AY2F-fr | M6 | 14.0 | 25.0 | 2.4 | 2.4 | 10 | 30 |
| E88B85Y2F-fr | M6 | 14.0 | 30.0 | 2.4 | 2.4 | 10 | 30 |
| E88B8AY2F-fr | M6 | 14.0 | 35.0 | 2.4 | 2.4 | 10 | 30 |
| E88B95Y2F-fr | M6 | 14.0 | 40.0 | 2.4 | 2.4 | 10 | 30 |
| E88B9AY2F-fr | M6 | 14.0 | 45.0 | 2.4 | 2.4 | 10 | 30 |
| E88BA5Y2F-fr | M6 | 14.0 | 50.0 | 2.4 | 2.4 | 10 | 30 |
| E88BB5Y2F-fr | M6 | 14.0 | 60.0 | 2.4 | 2.4 | 10 | 30 |
| E88BBY2F-fr  | M6 | 14.0 | 6.0  | 2.4 | 2.4 | 10 | 30 |
| E88BDY2F-fr  | M6 | 14.0 | 8.0  | 2.4 | 2.4 | 10 | 30 |
| E88D65Y2F-fr | M8 | 18.0 | 10.0 | 2.7 | 2.7 | 13 | 40 |
| E88D67Y2F-fr | M8 | 18.0 | 12.0 | 2.7 | 2.7 | 13 | 40 |
| E88D6BY2F-fr | M8 | 18.0 | 16.0 | 2.7 | 2.7 | 13 | 40 |
| E88D75Y2F-fr | M8 | 18.0 | 20.0 | 2.7 | 2.7 | 13 | 40 |
| E88D7AY2F-fr | M8 | 18.0 | 25.0 | 2.7 | 2.7 | 13 | 40 |
| E88D85Y2F-fr | M8 | 18.0 | 30.0 | 2.7 | 2.7 | 13 | 40 |

|              |    |      |      |     |     |    |    |
|--------------|----|------|------|-----|-----|----|----|
| E88D8AY2F-fr | M8 | 18.0 | 35.0 | 2.7 | 2.7 | 13 | 40 |
| E88D95Y2F-fr | M8 | 18.0 | 40.0 | 2.7 | 2.7 | 13 | 40 |
| E88D9AY2F-fr | M8 | 18.0 | 45.0 | 2.7 | 2.7 | 13 | 40 |
| E88DA5Y2F-fr | M8 | 18.0 | 50.0 | 2.7 | 2.7 | 13 | 40 |
| E88DB5Y2F-fr | M8 | 18.0 | 60.0 | 2.7 | 2.7 | 13 | 40 |
| E88DBY2F-fr  | M8 | 18.0 | 6.0  | 2.7 | 2.7 | 13 | 40 |
| E88DDY2F-fr  | M8 | 18.0 | 8.0  | 2.7 | 2.7 | 13 | 40 |
| E889BY2F-en  | M4 | 11.5 | 6.0  | 2.0 | 2.0 | 8  | 20 |
| E889BY2F-de  | M4 | 11.5 | 6.0  | 2.0 | 2.0 | 8  | 20 |
| E889DY2F-en  | M4 | 11.5 | 8.0  | 2.0 | 2.0 | 8  | 20 |
| E889DY2F-de  | M4 | 11.5 | 8.0  | 2.0 | 2.0 | 8  | 20 |
| E88A65Y2F-en | M5 | 11.5 | 10.0 | 2.0 | 2.0 | 8  | 20 |
| E88A65Y2F-de | M5 | 11.5 | 10.0 | 2.0 | 2.0 | 8  | 20 |
| E88A67Y2F-en | M5 | 11.5 | 12.0 | 2.0 | 2.0 | 8  | 20 |
| E88A67Y2F-de | M5 | 11.5 | 12.0 | 2.0 | 2.0 | 8  | 20 |
| E88A6BY2F-en | M5 | 11.5 | 16.0 | 2.0 | 2.0 | 8  | 20 |
| E88A6BY2F-de | M5 | 11.5 | 16.0 | 2.0 | 2.0 | 8  | 20 |
| E88A75Y2F-en | M5 | 11.5 | 20.0 | 2.0 | 2.0 | 8  | 20 |
| E88A75Y2F-de | M5 | 11.5 | 20.0 | 2.0 | 2.0 | 8  | 20 |
| E88A7AY2F-en | M5 | 11.5 | 25.0 | 2.0 | 2.0 | 8  | 20 |
| E88A7AY2F-de | M5 | 11.5 | 25.0 | 2.0 | 2.0 | 8  | 20 |
| E88A85Y2F-en | M5 | 11.5 | 30.0 | 2.0 | 2.0 | 8  | 20 |
| E88A85Y2F-de | M5 | 11.5 | 30.0 | 2.0 | 2.0 | 8  | 20 |
| E88A8AY2F-en | M5 | 11.5 | 35.0 | 2.0 | 2.0 | 8  | 20 |
| E88A8AY2F-de | M5 | 11.5 | 35.0 | 2.0 | 2.0 | 8  | 20 |

|              |    |      |      |     |     |    |    |
|--------------|----|------|------|-----|-----|----|----|
| E88A9AY2F-en | M5 | 11.5 | 45.0 | 2.0 | 2.0 | 8  | 20 |
| E88A9AY2F-de | M5 | 11.5 | 45.0 | 2.0 | 2.0 | 8  | 20 |
| E88AA5Y2F-en | M5 | 11.5 | 50.0 | 2.0 | 2.0 | 8  | 20 |
| E88AA5Y2F-de | M5 | 11.5 | 50.0 | 2.0 | 2.0 | 8  | 20 |
| E88ABY2F-en  | M5 | 11.5 | 6.0  | 2.0 | 2.0 | 8  | 20 |
| E88ABY2F-de  | M5 | 11.5 | 6.0  | 2.0 | 2.0 | 8  | 20 |
| E88ADY2F-en  | M5 | 11.5 | 8.0  | 2.0 | 2.0 | 8  | 20 |
| E88ADY2F-de  | M5 | 11.5 | 8.0  | 2.0 | 2.0 | 8  | 20 |
| E88B65Y2F-en | M6 | 14.0 | 10.0 | 2.4 | 2.4 | 10 | 30 |
| E88B65Y2F-de | M6 | 14.0 | 10.0 | 2.4 | 2.4 | 10 | 30 |
| E88B67Y2F-en | M6 | 14.0 | 12.0 | 2.4 | 2.4 | 10 | 30 |
| E88B67Y2F-de | M6 | 14.0 | 12.0 | 2.4 | 2.4 | 10 | 30 |
| E88B6BY2F-en | M6 | 14.0 | 16.0 | 2.4 | 2.4 | 10 | 30 |
| E88B6BY2F-de | M6 | 14.0 | 16.0 | 2.4 | 2.4 | 10 | 30 |
| E88B75Y2F-en | M6 | 14.0 | 20.0 | 2.4 | 2.4 | 10 | 30 |
| E88B75Y2F-de | M6 | 14.0 | 20.0 | 2.4 | 2.4 | 10 | 30 |
| E88B7AY2F-en | M6 | 14.0 | 25.0 | 2.4 | 2.4 | 10 | 30 |
| E88B7AY2F-de | M6 | 14.0 | 25.0 | 2.4 | 2.4 | 10 | 30 |
| E88B85Y2F-en | M6 | 14.0 | 30.0 | 2.4 | 2.4 | 10 | 30 |
| E88B85Y2F-de | M6 | 14.0 | 30.0 | 2.4 | 2.4 | 10 | 30 |
| E88B8AY2F-en | M6 | 14.0 | 35.0 | 2.4 | 2.4 | 10 | 30 |
| E88B8AY2F-de | M6 | 14.0 | 35.0 | 2.4 | 2.4 | 10 | 30 |
| E88B95Y2F-en | M6 | 14.0 | 40.0 | 2.4 | 2.4 | 10 | 30 |
| E88B95Y2F-de | M6 | 14.0 | 40.0 | 2.4 | 2.4 | 10 | 30 |
| E88B9AY2F-en | M6 | 14.0 | 45.0 | 2.4 | 2.4 | 10 | 30 |

|              |    |      |      |     |     |    |    |
|--------------|----|------|------|-----|-----|----|----|
| E88B9AY2F-de | M6 | 14.0 | 45.0 | 2.4 | 2.4 | 10 | 30 |
| E88BA5Y2F-en | M6 | 14.0 | 50.0 | 2.4 | 2.4 | 10 | 30 |
| E88BA5Y2F-de | M6 | 14.0 | 50.0 | 2.4 | 2.4 | 10 | 30 |
| E88BB5Y2F-en | M6 | 14.0 | 60.0 | 2.4 | 2.4 | 10 | 30 |
| E88BB5Y2F-de | M6 | 14.0 | 60.0 | 2.4 | 2.4 | 10 | 30 |
| E88BBY2F-en  | M6 | 14.0 | 6.0  | 2.4 | 2.4 | 10 | 30 |
| E88BBY2F-de  | M6 | 14.0 | 6.0  | 2.4 | 2.4 | 10 | 30 |
| E88BDY2F-en  | M6 | 14.0 | 8.0  | 2.4 | 2.4 | 10 | 30 |
| E88BDY2F-de  | M6 | 14.0 | 8.0  | 2.4 | 2.4 | 10 | 30 |
| E88D65Y2F-en | M8 | 18.0 | 10.0 | 2.7 | 2.7 | 13 | 40 |
| E88D65Y2F-de | M8 | 18.0 | 10.0 | 2.7 | 2.7 | 13 | 40 |
| E88D67Y2F-en | M8 | 18.0 | 12.0 | 2.7 | 2.7 | 13 | 40 |
| E88D67Y2F-de | M8 | 18.0 | 12.0 | 2.7 | 2.7 | 13 | 40 |
| E88D6BY2F-en | M8 | 18.0 | 16.0 | 2.7 | 2.7 | 13 | 40 |
| E88D6BY2F-de | M8 | 18.0 | 16.0 | 2.7 | 2.7 | 13 | 40 |
| E88D75Y2F-en | M8 | 18.0 | 20.0 | 2.7 | 2.7 | 13 | 40 |
| E88D75Y2F-de | M8 | 18.0 | 20.0 | 2.7 | 2.7 | 13 | 40 |
| E88D7AY2F-en | M8 | 18.0 | 25.0 | 2.7 | 2.7 | 13 | 40 |
| E88D7AY2F-de | M8 | 18.0 | 25.0 | 2.7 | 2.7 | 13 | 40 |
| E88D85Y2F-en | M8 | 18.0 | 30.0 | 2.7 | 2.7 | 13 | 40 |
| E88D85Y2F-de | M8 | 18.0 | 30.0 | 2.7 | 2.7 | 13 | 40 |
| E88D8AY2F-en | M8 | 18.0 | 35.0 | 2.7 | 2.7 | 13 | 40 |
| E88D8AY2F-de | M8 | 18.0 | 35.0 | 2.7 | 2.7 | 13 | 40 |
| E88D95Y2F-en | M8 | 18.0 | 40.0 | 2.7 | 2.7 | 13 | 40 |
| E88D95Y2F-de | M8 | 18.0 | 40.0 | 2.7 | 2.7 | 13 | 40 |

| E88D9AY2F-en | M8 | 18.0     | 45.0     | 2.7 | 2.7     | 13 | 40   |           |
|--------------|----|----------|----------|-----|---------|----|------|-----------|
| E88D9AY2F-de | M8 | 18.0     | 45.0     | 2.7 | 2.7     | 13 | 40   |           |
| E88DA5Y2F-en | M8 | 18.0     | 50.0     | 2.7 | 2.7     | 13 | 40   |           |
| E88DA5Y2F-de | M8 | 18.0     | 50.0     | 2.7 | 2.7     | 13 | 40   |           |
| E88DB5Y2F-en | M8 | 18.0     | 60.0     | 2.7 | 2.7     | 13 | 40   |           |
| E88DB5Y2F-de | M8 | 18.0     | 60.0     | 2.7 | 2.7     | 13 | 40   |           |
| E88DBY2F-en  | M8 | 18.0     | 6.0      | 2.7 | 2.7     | 13 | 40   |           |
| E88DBY2F-de  | M8 | 18.0     | 6.0      | 2.7 | 2.7     | 13 | 40   |           |
| E88DDY2F-en  | M8 | 18.0     | 8.0      | 2.7 | 2.7     | 13 | 40   |           |
| E88DDY2F-de  | M8 | 18.0     | 8.0      | 2.7 | 2.7     | 13 | 40   |           |
| REF          | D  | DIAMÈTRE | LONGUEUR | H   | HAUTEUR | S  | TORX | PARTNOFIL |