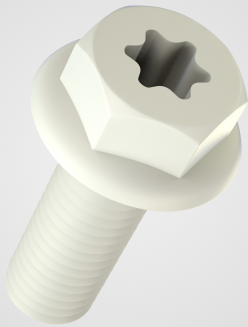


Hex head screws flanged with 6 lobe drive



The hexagonal head / 6-lobe screw with flange is a fully threaded plastic screw, recommended for precise and reliable assemblies. Its Torx star-shaped drive with six lobes ensures high tightening torque, minimizing screw damage even during intensive use. Compatible with a dedicated screwdriver or a suitable wrench, this screw combines strength and practicality. Made of plastic, the hexagonal head / 6-lobe screw with flange guarantees a clean and secure grip for projects requiring durability and robustness.

REF	D	DIAM??TRE	LONGUEUR	H	HAUTEUR	S	TORX	PARTNOFI
E886565Y2F-en	M10	21.0	10.0	3.5	3.5	16	50	
E886567Y2F-en	M10	21.0	12.0	3.5	3.5	16	50	
E88656BY2F-en	M10	21.0	16.0	3.5	3.5	16	50	
E886575Y2F-en	M10	21.0	20.0	3.5	3.5	16	50	
E88657AY2F-en	M10	21.0	25.0	3.5	3.5	16	50	
E886585Y2F-en	M10	21.0	30.0	3.5	3.5	16	50	
E88658AY2F-en	M10	21.0	35.0	3.5	3.5	16	50	
E886595Y2F-en	M10	21.0	40.0	3.5	3.5	16	50	
E88659AY2F-en	M10	21.0	45.0	3.5	3.5	16	50	
E8865A5Y2F-en	M10	21.0	50.0	3.5	3.5	16	50	

E8865B5Y2F-en	M10	21.0	60.0	3.5	3.5	16	50
E8865BY2F-en	M10	21.0	6.0	3.5	3.5	16	50
E8865DY2F-en	M10	21.0	8.0	3.5	3.5	16	50
E886765Y2F-en	M12	21.0	10.0	3.5	3.5	16	50
E886767Y2F-en	M12	21.0	12.0	3.5	3.5	16	50
E88676BY2F-en	M12	21.0	16.0	3.5	3.5	16	50
E886775Y2F-en	M12	21.0	20.0	3.5	3.5	16	50
E88677AY2F-en	M12	21.0	25.0	3.5	3.5	16	50
E886785Y2F-en	M12	21.0	30.0	3.5	3.5	16	50
E88678AY2F-en	M12	21.0	35.0	3.5	3.5	16	50
E886795Y2F-en	M12	21.0	40.0	3.5	3.5	16	50
E88679AY2F-en	M12	21.0	45.0	3.5	3.5	16	50
E8867A5Y2F-en	M12	21.0	50.0	3.5	3.5	16	50
E8867B5Y2F-en	M12	21.0	60.0	3.5	3.5	16	50
E8867C5Y2F-en	M12	21.0	70.0	3.5	3.5	16	50
E8867D5Y2F-en	M12	21.0	80.0	3.5	3.5	16	50
E88965Y2F-fr	M4	11.5	10.0	2.0	2.0	8	20
E88967Y2F-fr	M4	11.5	12.0	2.0	2.0	8	20

E8896BY2F-fr	M4	11.5	16.0	2.0	2.0	8	20	
E88975Y2F-fr	M4	11.5	20.0	2.0	2.0	8	20	
E8897AY2F-fr	M4	11.5	25.0	2.0	2.0	8	20	
E88985/7AY2F-fr	M4	11.5	30.0	2.0	2.0	8	20	5.0
E889BY2F-en	M4	11.5	6.0	2.0	2.0	8	20	
E889DY2F-en	M4	11.5	8.0	2.0	2.0	8	20	
E88A65Y2F-en	M5	11.5	10.0	2.0	2.0	8	20	
E88A67Y2F-en	M5	11.5	12.0	2.0	2.0	8	20	
E88A6BY2F-en	M5	11.5	16.0	2.0	2.0	8	20	
E88A75Y2F-en	M5	11.5	20.0	2.0	2.0	8	20	
E88A7AY2F-en	M5	11.5	25.0	2.0	2.0	8	20	
E88A85Y2F-en	M5	11.5	30.0	2.0	2.0	8	20	
E88A8AY2F-en	M5	11.5	35.0	2.0	2.0	8	20	
E88A9AY2F-en	M5	11.5	45.0	2.0	2.0	8	20	
E88AA5Y2F-en	M5	11.5	50.0	2.0	2.0	8	20	
E88ABY2F-en	M5	11.5	6.0	2.0	2.0	8	20	
E88ADY2F-en	M5	11.5	8.0	2.0	2.0	8	20	
E88B65Y2F-en	M6	14.0	10.0	2.4	2.4	10	30	
E88B67Y2F-en	M6	14.0	12.0	2.4	2.4	10	30	
E88B6BY2F-en	M6	14.0	16.0	2.4	2.4	10	30	
E88B75Y2F-en	M6	14.0	20.0	2.4	2.4	10	30	
E88B7AY2F-en	M6	14.0	25.0	2.4	2.4	10	30	
E88B85Y2F-en	M6	14.0	30.0	2.4	2.4	10	30	
E88B8AY2F-en	M6	14.0	35.0	2.4	2.4	10	30	

E88B95Y2F-en	M6	14.0	40.0	2.4	2.4	10	30
E88B9AY2F-en	M6	14.0	45.0	2.4	2.4	10	30
E88BA5Y2F-en	M6	14.0	50.0	2.4	2.4	10	30
E88BB5Y2F-en	M6	14.0	60.0	2.4	2.4	10	30
E88BBY2F-en	M6	14.0	6.0	2.4	2.4	10	30
E88BDY2F-en	M6	14.0	8.0	2.4	2.4	10	30
E88D65Y2F-en	M8	18.0	10.0	2.7	2.7	13	40
E88D67Y2F-en	M8	18.0	12.0	2.7	2.7	13	40
E88D6BY2F-en	M8	18.0	16.0	2.7	2.7	13	40
E88D75Y2F-en	M8	18.0	20.0	2.7	2.7	13	40
E88D7AY2F-en	M8	18.0	25.0	2.7	2.7	13	40
E88D85Y2F-en	M8	18.0	30.0	2.7	2.7	13	40
E88D8AY2F-en	M8	18.0	35.0	2.7	2.7	13	40
E88D95Y2F-en	M8	18.0	40.0	2.7	2.7	13	40
E88D9AY2F-en	M8	18.0	45.0	2.7	2.7	13	40
E88DA5Y2F-en	M8	18.0	50.0	2.7	2.7	13	40
E88DB5Y2F-en	M8	18.0	60.0	2.7	2.7	13	40
E88DBY2F-en	M8	18.0	6.0	2.7	2.7	13	40
E88DDY2F-en	M8	18.0	8.0	2.7	2.7	13	40
E889BY2F-fr	M4	11.5	6.0	2.0	2.0	8	20
E889BY2F-de	M4	11.5	6.0	2.0	2.0	8	20
E889DY2F-fr	M4	11.5	8.0	2.0	2.0	8	20
E889DY2F-de	M4	11.5	8.0	2.0	2.0	8	20
E88A65Y2F-fr	M5	11.5	10.0	2.0	2.0	8	20
E88A65Y2F-de	M5	11.5	10.0	2.0	2.0	8	20

E88A67Y2F-fr	M5	11.5	12.0	2.0	2.0	8	20
E88A67Y2F-de	M5	11.5	12.0	2.0	2.0	8	20
E88A6BY2F-fr	M5	11.5	16.0	2.0	2.0	8	20
E88A6BY2F-de	M5	11.5	16.0	2.0	2.0	8	20
E88A75Y2F-fr	M5	11.5	20.0	2.0	2.0	8	20
E88A75Y2F-de	M5	11.5	20.0	2.0	2.0	8	20
E88A7AY2F-fr	M5	11.5	25.0	2.0	2.0	8	20
E88A7AY2F-de	M5	11.5	25.0	2.0	2.0	8	20
E88A85Y2F-fr	M5	11.5	30.0	2.0	2.0	8	20
E88A85Y2F-de	M5	11.5	30.0	2.0	2.0	8	20
E88A8AY2F-fr	M5	11.5	35.0	2.0	2.0	8	20
E88A8AY2F-de	M5	11.5	35.0	2.0	2.0	8	20
E88A9AY2F-fr	M5	11.5	45.0	2.0	2.0	8	20
E88A9AY2F-de	M5	11.5	45.0	2.0	2.0	8	20
E88AA5Y2F-fr	M5	11.5	50.0	2.0	2.0	8	20
E88AA5Y2F-de	M5	11.5	50.0	2.0	2.0	8	20
E88ABY2F-fr	M5	11.5	6.0	2.0	2.0	8	20
E88ABY2F-de	M5	11.5	6.0	2.0	2.0	8	20
E88ADY2F-fr	M5	11.5	8.0	2.0	2.0	8	20
E88ADY2F-de	M5	11.5	8.0	2.0	2.0	8	20
E88B65Y2F-fr	M6	14.0	10.0	2.4	2.4	10	30
E88B65Y2F-de	M6	14.0	10.0	2.4	2.4	10	30
E88B67Y2F-fr	M6	14.0	12.0	2.4	2.4	10	30
E88B67Y2F-de	M6	14.0	12.0	2.4	2.4	10	30
E88B6BY2F-fr	M6	14.0	16.0	2.4	2.4	10	30

E88B6BY2F-de	M6	14.0	16.0	2.4	2.4	10	30
E88B75Y2F-fr	M6	14.0	20.0	2.4	2.4	10	30
E88B75Y2F-de	M6	14.0	20.0	2.4	2.4	10	30
E88B7AY2F-fr	M6	14.0	25.0	2.4	2.4	10	30
E88B7AY2F-de	M6	14.0	25.0	2.4	2.4	10	30
E88B85Y2F-fr	M6	14.0	30.0	2.4	2.4	10	30
E88B85Y2F-de	M6	14.0	30.0	2.4	2.4	10	30
E88B8AY2F-fr	M6	14.0	35.0	2.4	2.4	10	30
E88B8AY2F-de	M6	14.0	35.0	2.4	2.4	10	30
E88B95Y2F-fr	M6	14.0	40.0	2.4	2.4	10	30
E88B95Y2F-de	M6	14.0	40.0	2.4	2.4	10	30
E88B9AY2F-fr	M6	14.0	45.0	2.4	2.4	10	30
E88B9AY2F-de	M6	14.0	45.0	2.4	2.4	10	30
E88BA5Y2F-fr	M6	14.0	50.0	2.4	2.4	10	30
E88BA5Y2F-de	M6	14.0	50.0	2.4	2.4	10	30
E88BB5Y2F-fr	M6	14.0	60.0	2.4	2.4	10	30
E88BB5Y2F-de	M6	14.0	60.0	2.4	2.4	10	30
E88BBY2F-fr	M6	14.0	6.0	2.4	2.4	10	30
E88BBY2F-de	M6	14.0	6.0	2.4	2.4	10	30
E88BDY2F-fr	M6	14.0	8.0	2.4	2.4	10	30
E88BDY2F-de	M6	14.0	8.0	2.4	2.4	10	30
E88D65Y2F-fr	M8	18.0	10.0	2.7	2.7	13	40
E88D65Y2F-de	M8	18.0	10.0	2.7	2.7	13	40
E88D67Y2F-fr	M8	18.0	12.0	2.7	2.7	13	40
E88D67Y2F-de	M8	18.0	12.0	2.7	2.7	13	40

E88D6BY2F-fr	M8	18.0	16.0	2.7	2.7	13	40	
E88D6BY2F-de	M8	18.0	16.0	2.7	2.7	13	40	
E88D75Y2F-fr	M8	18.0	20.0	2.7	2.7	13	40	
E88D75Y2F-de	M8	18.0	20.0	2.7	2.7	13	40	
E88D7AY2F-fr	M8	18.0	25.0	2.7	2.7	13	40	
E88D7AY2F-de	M8	18.0	25.0	2.7	2.7	13	40	
E88D85Y2F-fr	M8	18.0	30.0	2.7	2.7	13	40	
E88D85Y2F-de	M8	18.0	30.0	2.7	2.7	13	40	
E88D8AY2F-fr	M8	18.0	35.0	2.7	2.7	13	40	
E88D8AY2F-de	M8	18.0	35.0	2.7	2.7	13	40	
E88D95Y2F-fr	M8	18.0	40.0	2.7	2.7	13	40	
E88D95Y2F-de	M8	18.0	40.0	2.7	2.7	13	40	
E88D9AY2F-fr	M8	18.0	45.0	2.7	2.7	13	40	
E88D9AY2F-de	M8	18.0	45.0	2.7	2.7	13	40	
E88DA5Y2F-fr	M8	18.0	50.0	2.7	2.7	13	40	
E88DA5Y2F-de	M8	18.0	50.0	2.7	2.7	13	40	
E88DB5Y2F-fr	M8	18.0	60.0	2.7	2.7	13	40	
E88DB5Y2F-de	M8	18.0	60.0	2.7	2.7	13	40	
E88DBY2F-fr	M8	18.0	6.0	2.7	2.7	13	40	
E88DBY2F-de	M8	18.0	6.0	2.7	2.7	13	40	
E88DDY2F-fr	M8	18.0	8.0	2.7	2.7	13	40	
E88DDY2F-de	M8	18.0	8.0	2.7	2.7	13	40	
REF	D	DIAM??TRE	LONGUEUR	H	HAUTEUR	S	TORX	PARTNOFI